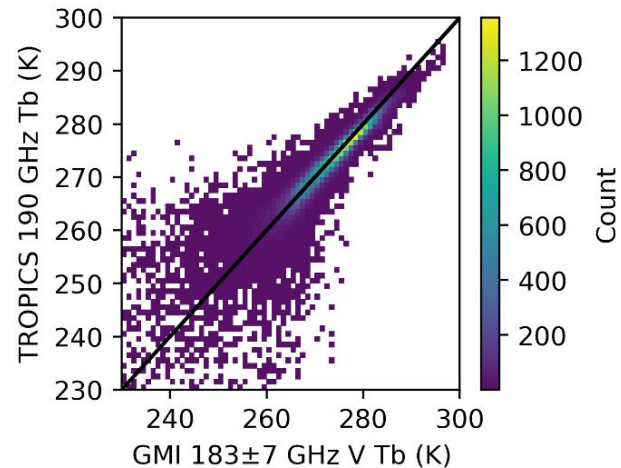
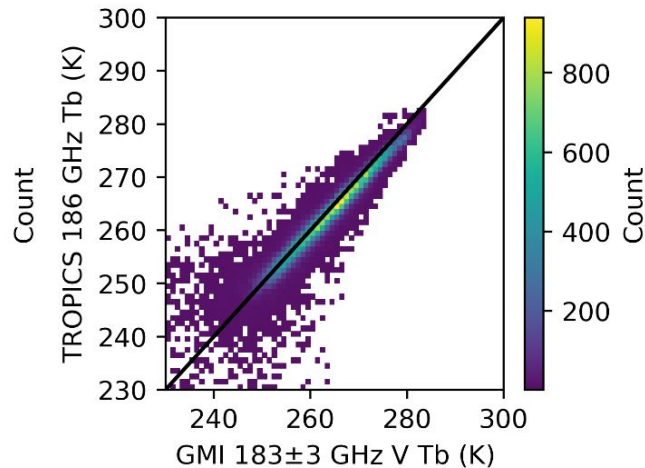
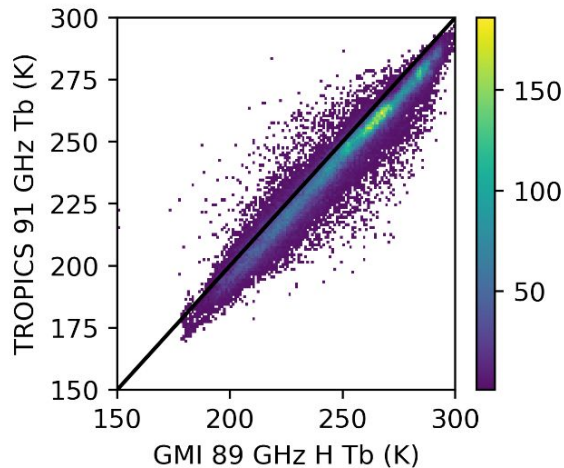
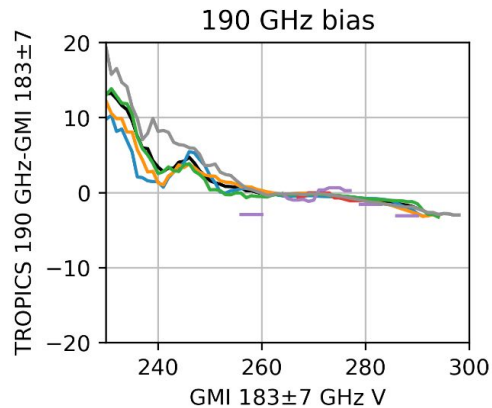
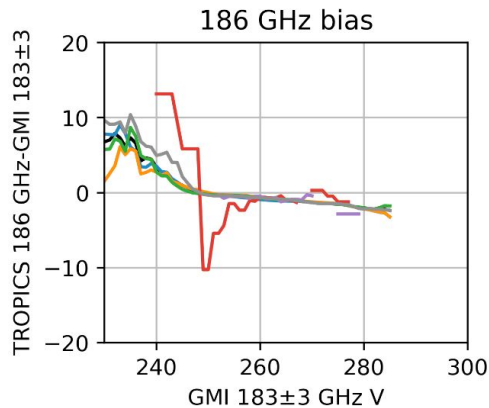
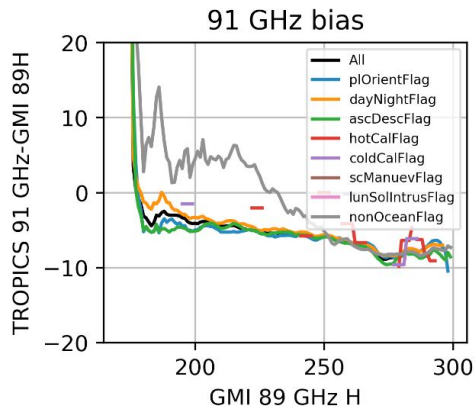
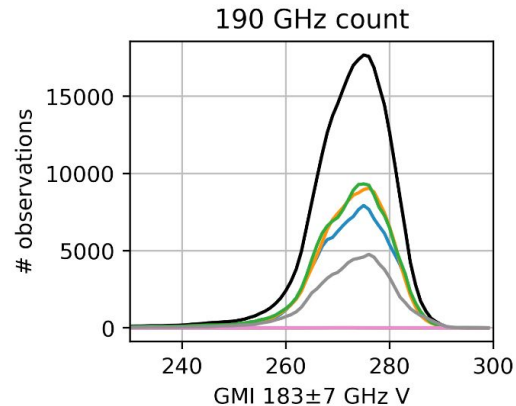
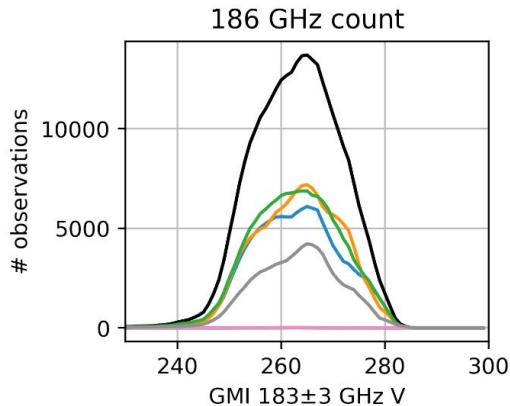
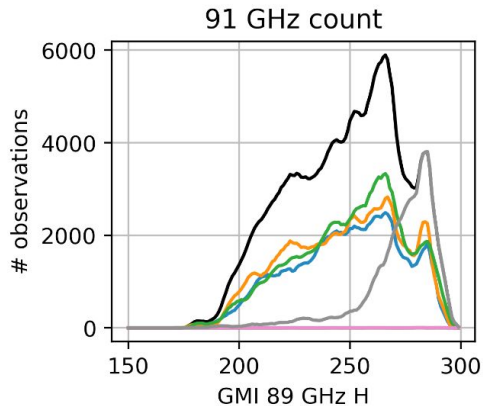


TROPICS03 Calibration Assessment

Method: GMI coincident overpasses (< 10 min time difference, <15 km distance, <1° EIA difference),
~60,000 matched observations

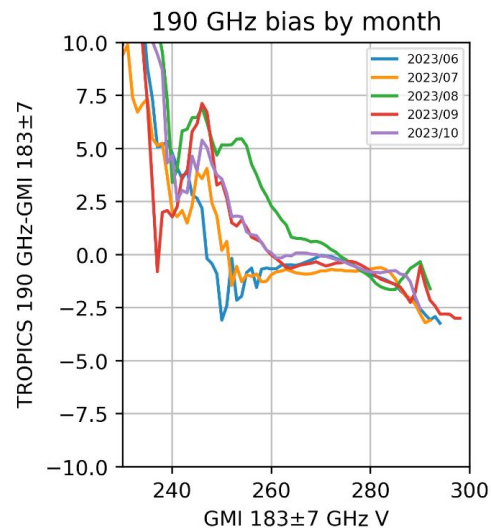
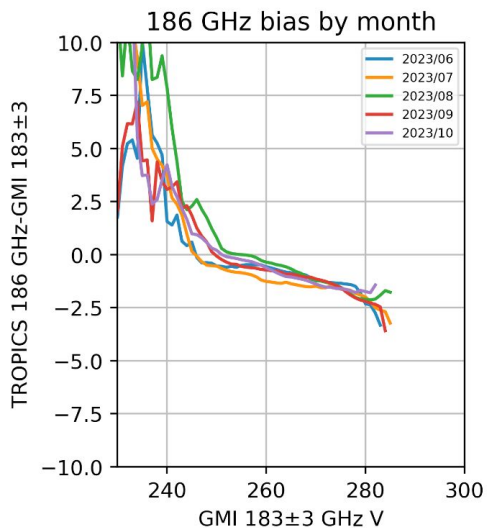
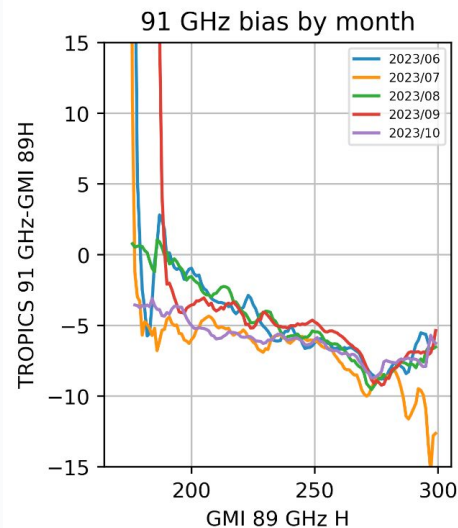
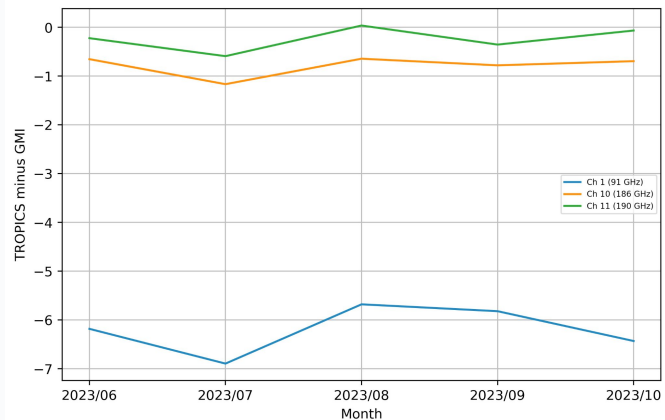


TROPICS03-GMI Bias by QC Flag Status



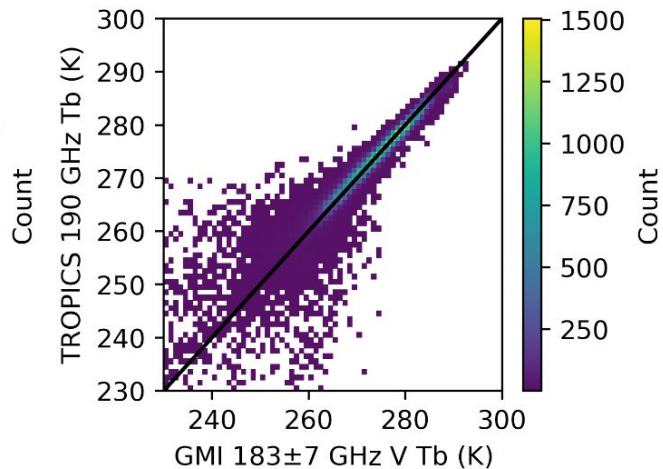
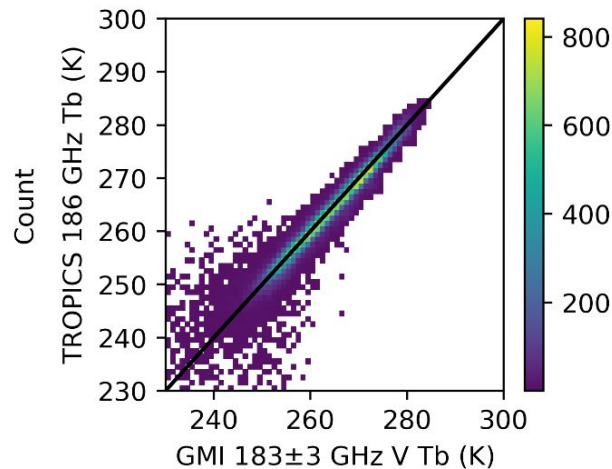
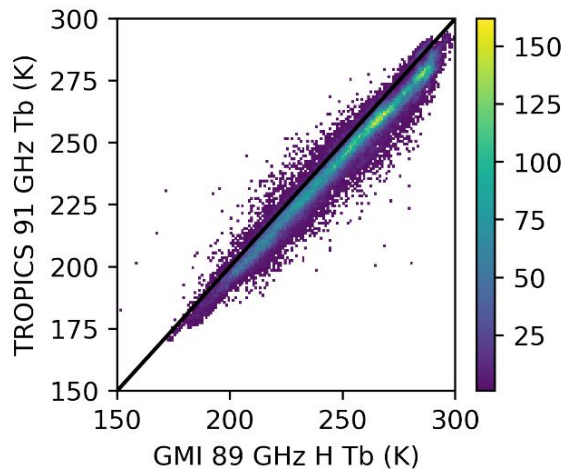
“All” excludes hotCalFlag, coldCalFlag, scManuevFlag, and lunSolIntrusFlag

TROPICS03-GMI Calibration Stability

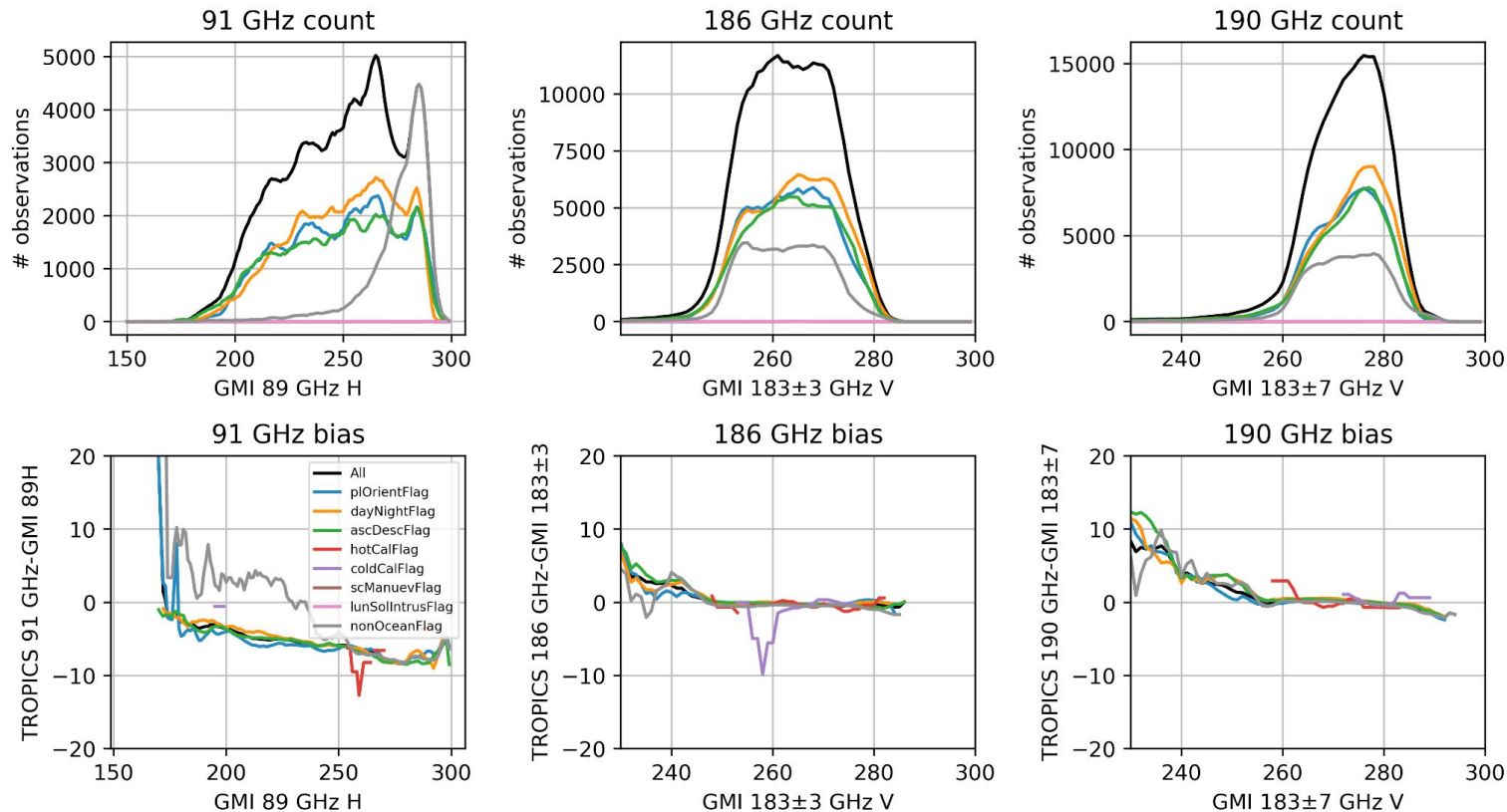


TROPICS06 Calibration Assessment

Method: GMI coincident overpasses (< 10 min time difference, <15 km distance, <1° EIA difference),
 ~60,000 matched observations



TROPICS06-GMI Bias by QC Flag Status



“All” excludes hotCalFlag, coldCalFlag, scManuevFlag, and lunSolIntrusFlag

TROPICS06-GMI Calibration Stability

